



LE TAS DE SABLE
CHES PANSES VERTES
CENTRE NATIONAL DE LA MARIONNETTE

En préparation

Presentation booklet

Place and company of creation, artistic and cultural researches around the puppetry arts and contemporary writings, Le Tas de Sable-Ches Panses Vertes, Centre National de la Marionnette (en préparation) develops its projects in five main axes at the service of artists and audiences :

**Creating & Producing | Experimenting & Researching | Programming | Manufacturing
| Transmitting & Training**

It makes every effort to promote (artistic and structural) research and to support innovation. Established in the Hauts-de-France region, its playground extends to Europe and the whole world.

Directed by Sylvie Baillon, the Center welcomes artistic teams and supports young artists in their professional integration. Eric Goulouzelle is the artistic co-director. It is a place of training, open to different audiences, from the youngest age to university and up to professional integration. Through puppetry highlights, the Center offers, in addition to a program throughout the territory of Hauts-de-France, practical workshops and exchanges between artists and local communities. Finally, the structure works for a better (ac)knowledge(ment) of the puppetry arts in partnership with various networks.

TEAM :

Director Sylvie Baillon | Artistic co-director Éric Goulouzelle | Administrator Marie Gaillard | General secretary and responsible of Creative Partnerships Élise Follet | Project manager for Training and Communication projects Geoffrey Cartry | Project manager for Residencies and Programming Lucas Clauzard | Project manager for Producing and Schools and international projects Marjorie Doussot | Accounting and payroll manager Claudine Pronnier | Technical manager Clément Anquetil

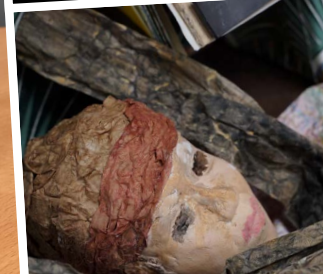
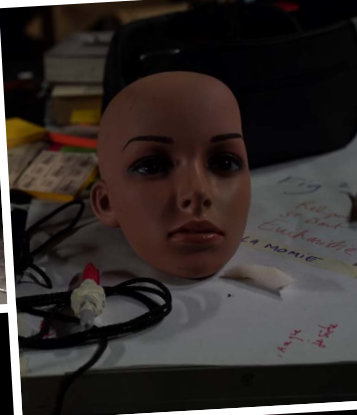
CONTACTS :

info@letasdesable-cpv.org
first name.last name@letasdesable-cpv.org

TABLE OF CONTENTS

CREATING & PRODUCING	P.5
EXPERIMENTING & RESEARCHING	P.10
PROGRAMMING	P.13
MANUFACTURING	P.15
TRANSMITTING & TRAINING	P.18
NETWORK & INTERNATIONAL COLLABORATIONS	P.24





| Creating & Producing |



The mission of Creating and Producing of Le Tas de Sable – Ches Panses Vertes represents the activity of the Compagnie Ches Panses Vertes, of accomplice artists, of companion artists and the whole activity of hosting residencies and co-producing. Together they thus define the artistic line of the Centre.

LA COMPAGNIE

Based in Amiens, in the Hauts-de-France region, the *Compagnie Ches Panses Vertes* was founded in 1979 by Georges and Michèle Baillon. Sylvie Baillon has been the company's director since 1986. She explores multiple languages through the puppet and the actor, and combines other disciplines within her creations. If the writing is at the foundation of the company's work on the set, the words are part of the artistic material in the same way as the actors, the light, the sound, the objects. It's about «dealing with» the material present on stage to expose the unsaid, the unspeakable, trying to sort it out, to get rid of our representations and clichés. It is the work of a creative team : Eric Goulouzelle (Constructor, performer and director), Antoine Vasseur (Scenographer) and Sophie Schaal (Costume designer).

“Writing the set by using the puppet as a dramatic instrument, because it has the virtue of totemizing speeches and it immediately affirms that we are in the theater. Renewing the relationship to illusion and creating meanings by combining intelligence and sensation...”

Sylvie Baillon

Shows and exhibitions on tour :

Le Menhir. Director: Éric Goulouzelle – 2019

Exhibition *Le Texte et la Forme* by Éric Goulouzelle – 2022

Available :

The book *sylvie baillon | marionnette, silence et totem à paroles*, by Patrick Boutigny, in collaboration with Eric Goulouzelle, Éditions Invenit – 2023

In creation :

Obsolète. Text: Alain Cofino Gomez - Director: Sylvie Baillon - 2024



ACCOMPLICES ARTISTS

The Centre uses all its energy to promote and develop the puppetry arts. With others, in a network, in collaboration, in association... The story that is told here is made of encounters, affinities and working together. Over the past few years, the Center has proposed to Jurate Trimakaitė, Véronique Lespérat-Héquet and Marie Godefroy to become accomplice artists.

| Jurate Trimakaitė |



Director and puppeteer, Jurate became Accomplice Artist at Le Tas de Sable – Ches Panses Vertes in 2018 after her companionship. She divides her work between France and Lithuania. Graduated from the Vilnius Academy (actress) in 2010, then from ESNAM (2014), she collaborates with many companies as a performer and joins the permanent troupe of the Vilnius Puppet Theater.

In 2020, she won the prize for Best Youth Show of the Year at the Aukšniniai Scenos Kryžiai for her show Antis, Mirtis ir Tulpe.

Her shows :

- Les Animaux Inéluctables - 2014 (Fr)
- Kas Tu? - 2015 (Lt)
- La Mort, Je n'y Crois Pas - 2016 (Fr)
- Kryptis - 2017
- Pièges - 2019 (Fr & Lt)
- Antis, Mirtis ir Tulpe - 2019 (Lt)
- Balerina Balerina – 2024 (Fr)



| Véronique Léspérat-Héquet |

Versatile poet, after training as a photography technician at CREAR in 1987, she became a photographer and videographer for shows. For the Compagnie Ches Panses Vertes, she produces video creations for shows.

Videographer-performer creating live images for the show “Et cependant” (2010), she also participates in numerous Le Tas de Sable – Ches Panses Vertes projects and has been following the Compagnie’s activities since 1988. Founding member of La Boîte à lucioles – Association for the promotion of the image. Multidisciplinary artist, photo, video, sound, writing, puppet, her project is to develop the interaction between art, artists and communities in a collective way. “What makes sense is the people, us, you, all of us, and the places, the landscapes, the spaces, what surrounds us, that we model or with which we compose. Poetry is inside everyone and every place, I seek to put it into images, words, sounds, and then return your mirror to you”. “Veilleuses”, a luminous poetic-puppet impromptu regularly accompanies the events of Marionnettes en Chemins.

| Marie Godefroy |

After a Bachelor degree in Philosophy, she studied at the Conservatory of Theater and Puppetry Arts in Amiens and trained at the Théâtre aux Mains Nues in Paris. Marie joined the 8th promotion of ESNAM in Charleville-Mézières, from 2008 to 2011. At the end of this training, she participated in the creation of the PROJET D collective within which she co-created and directed several shows.

She is currently working on two creations planned for 2024: Barrage Barrage with PROJET D and Crush, an object theater show created in connection with women prisoners in penitentiary centres. She is also working on the creation of a new show Oiseaux, which will be created from 2024 on.

Her shows :

- In creation : Oiseaux - 2024



COMPANION ARTISTS

“Companionship is the time during which a worker who has left an apprenticeship must work as a companion for a master before becoming a master himself. There are also associations between workers of the same profession which, from the 16th century, have as their essential goal, to ensure an elementary form of solidarity in the world of work. Companionship is also a form of mutual insurance, and a school of professional and moral instruction.”

In the puppetry arts, this time is necessary for specialization, for professional integration. This is at the heart of Le Tas de Sable – Ches Panses Vertes’ project.”

Sylvie Baillon

The Centre is committed to developing artistic support: asking ourselves together the dramaturgical questions, on the proposed forms, on the coherence of the acting and of what wants to be said... And because becoming an artist today and making it a profession is not obvious, we «support» them by offering them logistical and/or financial assistance, methodological support and/or support concerning administration, production, distribution and/or communication for a good development and better visibility of their work.

Each company or artist hosted at Le Tas de Sable benefits from an exchange adapted to their needs.

Le Tas de Sable – Ches Panses Vertes has been commissioned by the Ministry of Culture for puppetry arts companionship since 2008. This companionship mission continues today as part of the *Centre National de la Marionnette* label.



INVITED ARTISTS



The vocation of Le Tas de Sable – Ches Panses Vertes is to support companies in the creation of their shows by hosting them in residency. It offers puppet and other arts companies a place for research and work. Presentations of 'states of research' are organized to show the work in progress, to allow exchanges between professionals and to create moments of meeting with the distribution networks, other artists, students from the Conservatory, students from high schools or schools, the trainees of internship cycles...

Over each season, this represents around twenty artists and companies spread over around 15 projects and over around 220 days.

In addition, the Centre produces and co-produces several shows each year based on encounters and affinities with the values of the organisation.



| Experimenting & Researching |



At the heart of the Centre's project, experimenting and researching take ever-changing and innovative paths. Looking forward to moving forward with the times, the Center innovates, explores and invents. Constantly. For the first time, and in the continuity of this ever more developed axis, the Center has begun to work in partnership with its first associate researcher: Antoine Vasseur.

“Experimenting? It is to experience things in order to know them. It is to practice, to do something once, to experience an event, to make an attempt, it is about trying. It is also the testing of something, a test to verify its properties. Experimentation is what constitutes all “writing”/artistic practice. It is also a way of being in a cultural partnership. This is what guarantees being on a case-by-case basis. In any case, to be in this concern.”

Sylvie Baillon



ASSOCIATED RESEARCHER

| Antoine Vasseur |

After training in literature, theater and drawing, he continued his training at the University of Paris III then at the National School of Architecture in Nantes (ENSAN) from which he graduated with a DPEA 3rd cycle of scenography in 2003.

The entanglement | Scenographic research on the environment

Research project in the framework of the PhD Programme SACRePSL- SACRe (EA 7410)

“To work as a scenographer for the theatre, that is to say almost exclusively in the service of the spectacle of men and women, would then be to situate oneself precisely on a dividing line between what is human and what is not. In any case, it is the spectacle of this interference that I feel I witness. A show not at all spectacular where environments come true - that is to say often unpredictable arrangements between different forms of life, different bodies and different physical phenomena: the scene of an experience born out of the encounter between the human and his beyond.”

These seemingly drama-free shows belong to the factories, the workshops, the interservices and the entr’actes. In the theater they are rarely shown. My effort therefore consists in intensifying this process of scenographic formation by producing scenic hypotheses and simultaneously trying to elucidate it through the more speculative work of writing.”





COLLECTION & RESEARCH

| Collections |

Since 2021, an important work on the archives of the *Compagnie Ches Panses Vertes* has been led by Eric Goulouzele, accompanied in this long-term task by Françoise Lernout, retired museum curator. This concerns both the paper archives (posters, programme, press, working documents, etc.) and the puppets, sets, costumes and other scenographic elements.

| Hosting researcher |

The Centre makes its archives and the memory of those who keep it alive available to researchers.

In 2023, it welcomed Aristeo Tordesillas, PhD student at Lyon 2 University (laboratory Passages Arts & Littératures (XX-XXI) - EA 4160) whose thesis «The game of the actor-puppeteer and his training in France, from 1950 to the present day: an issue at the crossroads of theater theory, conceptions of teaching and institutional history.» is directed by Julie Sermon.

EXPÉRIMENTING

| Duo around death |

In 2023, the Center is starting a new artistic experimentation associating Sylvie Baillon, director and Héloïse Desrivères, author, but also Sophie Matel, Inès de Domahidy, Amandine Testu, Léna Brière, Gaël Seigneuret, puppeteers and Jonathan Brychcy, actor.

“Devoting a long time to a common search is about allowing ourselves to explore, to lose ourselves in order to better rediscover ourselves. This meeting will first come to nourish our individual practices: literature and puppetry. Through a system of regular laboratory and spread over time, we want to let this meeting decant to see the buds hatch. [...]

This will have a very simple consequence: we will disturb our scripts, which will necessarily invite us to reinvent our languages. Find a common language. Which resonate in our practices, our experiences, our ages and our desires. Observe how our lines will move. Shift our way of expressing ourselves: perhaps by inventing new modes of expression and most likely by accidentally discovering a poetic wonder. What brings us together is the desire to keep a permanence of the living in the

language, to claim its vitality against the deadly fixation of language. We want to vibrate a common language made of words and images that allow access to still unknown imaginaries. Telling the world differently.”

Héloïse Desrivères

| Mâche Tes Mots [M.T.M] |

Highlight over three days around contemporary writing for the puppet theatre, M.T.M is a research laboratory during which puppeteers meet contemporary authors for the pleasure of a work without particular stake, except that of meeting and experimenting, emblematic of the crossings and artistic emulations that Le Tas de Sable – Ches Panse Vertes intends to provoke and support.

| La coopérative œuvrière de production |

Cooperation at the heart & around artistic projects

PRINCIPLES: Thinking, inventing, experimenting with new paths for artistic creation, other methods of exchange with the public and circulation in the territories. Be an alternative and build a favorable setting for extraordinary projects. The coopérative œuvrière de production is based on a principle of reciprocity and the precepts of the social and solidarity economy. It is multidisciplinary, intergenerational and sociocratic. Anchored in the territories of its members, its actions are deployed at the national level.



La coopérative œuvrière de production a été cofinancée par l'Union Européenne dans le cadre du Fonds Social Européen (FSE).



| Programming |

The Centre conducts its programming action throughout partnerships forged to develop projects or highlights around puppetry arts. It puts its expertise and team at the service of projects that help raising awareness of these arts.

In Amiens with:

La Maison de la Culture - Le Théâtre Chés Cabotans - La Maison du Théâtre - La Lune des Pirates, Le Safran - Le Cirque Jules Verne - Le Centre Culturel Léo Lagrange - Le Centre Culturel Jacques Tati, Le Ciné Saint-Leu.

In the Hauts-de-France region with:

Théâtre Massenet, Lille - Théâtre L'oiseau Mouche, Lille - Le Zèbre, Albert – Les Scènes d'Abbeville - La Chambre d'Eau, Le Favril - La communauté de communes de Pays du Coquelicot - le foyer de vie d'Hornoy-le-Bourg - la commune de Leschelle - les Caves à Musiques, Tergnier - la Fondation Carasso - la ville de Tergnier - Le Centre Social Léo Lagrange de Roye - l'école de musique de Roye - La Nouvelle Scène, Nesle - l'école de musique de Ham - le CHU Amiens Sud - Le centre Thérapeutique de Méru - La Commune de Chaumont en Vexin – le Théâtre du Thelle, Méru, le Centre Hospitalier de St-Quentin, la Communauté de Communes Territoire Nord Picardie

...



| Marionnettes en Chemins |

After eight editions in the form of a festival on the roads of the Picardy then Hauts-de-France region, Marionnettes en Chemins became in 2019 a season of programming on various partner locations in Amiens and rural areas throughout the year.

Always driven by the desire to introduce contemporary puppetry arts in all its forms around times of encounters and sharing, the Marionnettes en Chemins season is an opportunity for the public to see shows, to meet puppeteers and to learn by participating in discovery workshops.

| Le MFEST |



The “MFEST: Marionnettes d’Enfer” (MFEST: One hell of (a) puppet) is a new biennial festival to discover contemporary puppetry arts. A program of international shows for adults. Four days to enjoy with happiness!

The first edition of the festival took place from October 13th to 16th, 2022 in eight places in Amiens: La Maison de la Culture, The Cirque Jules Verne, Le Safran, La Lune des Pirates, the Léo Lagrange Cultural Centre, the Maison du Théâtre, the Chés Cabotans Theater in Amiens and the Ciné St-Leu.

International shows for over 12s mainly because the challenge also lies in the desire to make the puppet resonate for adult audiences because let’s say shout it : NO! Puppets are not only for children!

And indeed, with a name reminiscent of the famous metal music festival “Hellfest”, the MFEST claims strong and sometimes trashy subjects and aesthetics, so you will not find a show for young audiences there.

Next edition in October 2024.



| Manufacturing |



“Manufacturing is neither programming nor training. It is about installing an artist on a territory and for a time. Allowing everyone to discover, to exchange. This way of working by listening to all the stakeholders is our trademark.”

Sylvie Baillon

CREATIVE PARTNERSHIPS

The Centre works with various organisations and local authorities to build projects around the puppetry arts. This co-construction can take various forms depending on the nature of the partnership and this on all geographical and artistic territories.

| PASSERELLES |

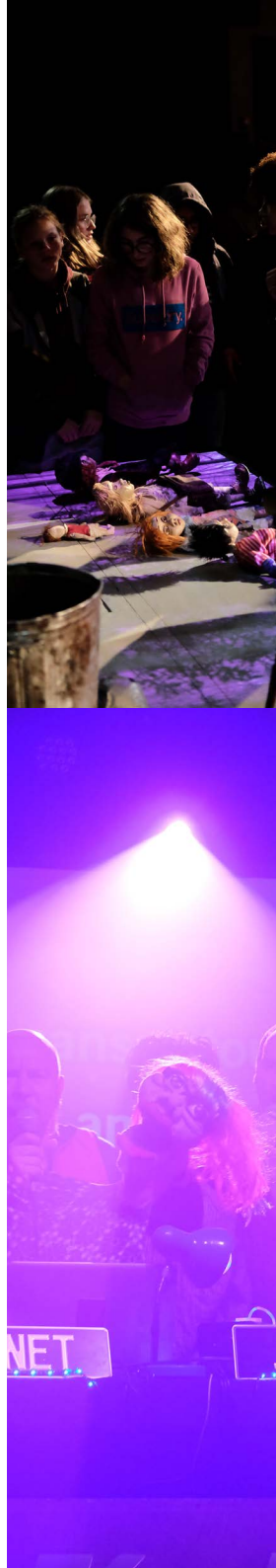
“Passerelles” (Bridges) is a series of actions that will lead to the creation of a puppet rock opera, a project set up in partnership with Les Caves à Musique in Tergnier.

Supported in their approach by professionals, the inhabitants and local communities of Tergnier will work with artists for three years, including François Chaffin, author, and Lucie Hanoï, puppeteer and director, to create a common work based on their (his)story(ies). At the same time being creators, carriers and transmitters of memories, all the people involved will first co-organize opportunities to exchange, to get to know each other and to talk (to each other), to then develop the framework of what will become their common creation for which they will share their memories, their current lives and how they see their future.

Project supported by the Daniel and Nina Carasso Foundation.

Carasso
Daniel & Nina
Fondation sous l'aide de la Fondation de France

**Les
CAVES à
MUSIQUE**
TERGNIER



| AQUA-MEMORIUM |

Elaboration of a suitcase form of theater with objects recovered in the water which can travel on the whole territory of the Somme valley.

The water awakens, stirs and wakes up. An explorer arrives in the mist, she highlights the 'aqua-rebus'. Whether forgotten, rusted, swallowed up or lost, memories have accumulated over time and water. By choosing object theater (a hybrid genre at the crossroads of puppetry, theater and visual arts) Inès de Domahidy gives voice to the invisible by sharing the memory of objects from the depths of the Somme, highlighting the issues of current overconsumption.

In April and May 2023, Inès de Domahidy offers a series of workshops to discover the world of object theater while participating in a project to raise awareness of the aquatic environment! Each object carries meaning and emotion and conveys a story.

In partnership with the FRAC, the PETR Cœur des Hauts de France, the Departmental Council of the Somme (direction of the river and the ports), the House of Fishing and Nature of Péronne and the City of Péronne, this action will end by a performance at nightfall of Aqua-Memorium in Péronne.



| Transmitting & Training |



COLLABORATION WITH SCHOOLS

Referent in terms of artistic education for what concerns puppetry arts in the Hauts-de-France region and holder of a State approval of the complementary educational associations of public education, the Center proposes, accompanies, organizes projects, workshops or interventions in school, educational and socio-cultural settings.

| Le Feu |

Nicolas Saëlens has been working for three years with students from Arthur Rimbaud High School around the notion of fire. Students will eventually be presenting their work at the Cirque Jules Verne.

L'ÉDUCATION ARTISTIQUE ET CULTURELLE (EAC)

The Center strives to solicit both the involvement of a local community and of a relay structure (school, college, high school, leisure center, family and rural center, social center, intergenerational club, etc.) to support them in setting up practical workshops and meetings. Each proposal will be co-constructed on a case-by-case basis and in consultation with the concerned local community and relay structure.

| Wingbeats Impromptu |

The "*Wingbeats Impromptu*" is a theatrically puppet performance. A short form of about fifteen minutes, played solo, it is the proposal to offer an artistic performance, a fleeting, poetic encounter, to so-called «disabled» audiences (that is to say, residents in constraint places and realities). This impromptu is visual, sound, sensory. The scenic device is deployed in the room of the hospitalized patient-spectator, or residing within an adapted structure. The Wingbeats Impromptu is aimed at young audiences from 5 years old and up to the most beautiful and old age of our elders.



PREFORMA

In 2020, the Centre signed a three-year agreement with the Somme Department aimed at offering construction and manipulation as an introduction to the puppetry arts for middle school students. In connection with partner organisations specialized in other disciplines, these workshops make it possible to cross practices and revolve around the discovery of an artistic practice through a show and a session of training workshops. Two one-week training periods and a program linked to the workshops are set up each year. These training courses are aimed at young people from the age of 12 from all walks of life and not necessarily belonging to the project's partner organisations.

Composed of a construction part and a game and manipulation part, they are not intended to present a show but may be the subject of a "curtain raiser".

2021-2022

- **La Communauté de Communes du Vimeu et le CAJ de Friville-Escarbotin**
with Jurate Trimakaite & Romaric Pivant + *La Mort? je n'y crois pas*
- **La Communauté de Communes Nièvre et Somme et la Cité scolaire Alfred Mannessier**
with Sayeh Sirvani & Eve Bigontina + *À ta place!, Cie Za!*
- **La Communauté de Communes Territoire Nord-Picardie et le Conservatoire à Rayonnement intercommunal de Villers-Bocage**
with Sarah & Alice Hebborn, Collectif Une Tribu + *Au Pied des Montagnes*

2022-2023

- **La Communauté de Communes du Pays du Coquelicot**
with Luc-Vincent Perche + *BibliOtron*
- **Le Centre Socio-Culturel Léo Lagrange de Roye**
with Solène Boyron & Camille Guéna, Cie Les ateliers de Pénélope + *Le Petit Vélo*
- **La Nouvelle Scène de Nesle et l'école de musique de Ham**
with Michel Villée & Noémie Vincart, Collectif Une Tribu + *La Brèche*



LES PARCOURS MARIONNETTIQUES

Since 2009, Le Tas de Sable - Ches Panses Vertes has been offering within its walls, the Parcours Marionnettique (“Puppetry Course”) designed as a real cycle of training and awareness-raising of puppetry arts. The workshops within the course are an opportunity to discover the universe of puppeteers and to apprehend puppetry arts through the conception and the approach that they have.

During a weekend, the workshops are intended for professionals in the performing arts (actors, dancers, visual artists, etc.) but also for pre-professionals (students from the Conservatory in particular), teachers and amateurs wishing to try out puppetry arts.

TRAINING IN THE REGIONAL CONSERVATORY (Amiens)

| Training in Puppetry Arts |

A space dedicated to a real initiation to the Arts of puppetry and a pre-professional training tool where to develop one’s personal aesthetics.

Training over 2 to 3 years 7 hours a week + 2 workshop a year

| C.P.E.S. in Puppetry Arts |

The CPES is a deepening of the bases acquired in the Training in Puppetry Arts preparing for the competition for higher training in Puppetry arts (incl. ESNAM).

Training over 2 years 16 hours a week + 4 workshops a year



TRAINING IN THE UNIVERSITY PICARDIE JULES VERNE (Amiens)

| Bachelor degree in Performing Arts |

Jurate Trimakaite, accomplice artist of the Centre has been working at the University of Picardie Jules Verne for several years as part of the Bachelor degree in Performing Arts.

| Cursus Aménagé Arts de la Marionnette |

The “Cursus Aménagé Arts de la Marionnette” (Adapted Course on Puppetry Arts) is part of the Master degree in Performing Arts.

TRAINING IN THE UNIVERSITY OF ARTOIS (Arras)

| Bachelor degree in Performing Arts |

Sylvie Baillon is leading a three-days course (21 hours) for about 20 students each year. After learning the fundamentals of puppet manipulation, students work on a puppetization of a dramatic text.



EVOC (Experimenting VOCational training for puppeteers)

Since 2018, several stakeholders in the field of puppetry arts in Europe have formed an informal network for exchanges and reflection, entitled «Puppet.Net» and coordinated by UNIMA (Union Internationale de la Marionnette).

In 2020, they decided to materialize the results of these exchanges in the form of a European mobility project allowing young puppeteers from all backgrounds to acquire professional skills, broaden knowledge of the practices of the puppetry arts and to reflect its diversity at a European level.

Because of the Covid crisis, the project had to be redesigned. Le Tas de Sable – Ches Panses Vertes is thus carrying out an experimental project in 2022, making it possible to lay the groundwork for a larger-scale European cooperation on the training and professionalization of puppeteers.

This experimental project was supported by the European Union, in the framework of the Erasmus+ programme.

The goal of the project were:

1. Experimenting new devices of vocational training for puppeteers.
2. Developing a common reflection on the professional structuring of the field of puppetry arts.
3. Updating the link between training and occupational integration. EVOC should be the place to think of this particular moment in the life of puppeteers.



Financé par
l'Union européenne





NETWORKING AND INTERNATIONAL COLLABORATIONS



To enrich its project, think about its actions, carry them out, the Center's ethic is to think, dream and act together. Le Tas de Sable – Ches Panses Vertes is involved in setting up think tanks, laboratories, projects dedicated to thinking about and developing other ways of “doing”: collective, solidarity and cooperative.

Networking is a way of sharing experiences and exchanging best practices and know-how. Le Tas de Sable – Ches Panses Vertes is thus involved in various professional networks, whether they are linked to performing arts i.e. in particular to puppetry arts or not, and whether they are transversal and affect the structure with regard to its missions, at regional, interregional, national and international level or not.

In addition to a notable participation in the work of recognition of the puppetry arts and the maintenance of the solidarity in this artistic field by strong partnership actions, Le Tas de Sable – Ches Panses Vertes invests more widely in cultural policies. Integrating into different networks (for projects, reflection, influence), getting involved in various associations, working groups, joining a union... This is part of its action.

The networks in which Le Tas de Sable - Ches Panses Vertes is involved :

[Thema](#) | [Actes Pro](#) | [UNIMA](#) | [Le Portail des Arts de la Marionnette](#) | [Chaire IciMa](#)

| Collaboration with the Kahraba Collective | (Lebanon)

In 2022, with the *Cabaret Migrant* project led by Éric Deniaud, the Centre is starting a new international partnership setting up a whole project of meetings and sharing during workshops, internships and residencies organised with and for young marginalized and/or professionalising artists.

| Collaboration with the Katkatha Puppet Arts Trust | (India)

The Centre produced the tour of the show *The Nights* in France. A creation which finds its origins in a workshop carried out in New Dehli for which Sylvie Baillon intervened at the level of the dramaturgy. The collaboration is articulated on times of residence, research and other times of training and internship intended for various audiences (Conservatory, Parcours Marionnette, schools, etc.)

| Collaboration with the Nordland Visual Theatre |

(Norvège)

Yngvild Aspeli, former companion of the Center, took over the direction of the Nordland Visual Theater in Stamsund in 2022. Artists are present, co-produced and accompanied in both structures: Rafi Martin (2022), Jurate Trimakaité (2024). In 2024, Sylvie Baillon and Eric Goulouzel go to the Stamsund Festival to meet the programed artists and lay the foundations for a long term partnership.

| Collaboration with the Djarama Compagny |

(Sénégal)

An artistic and structural cooperation between the Djarama association in Senegal and Le Tas de Sable – Ches Panses Vertes began in 2016. The Center will continue and strengthen this collaboration in order to participate in the consolidation of a space allowing both the development of professional artistic practices (theater, puppets, circus and street arts) in Senegal and the hosting and regular programming of French and international artists. This revolves around several dynamics :

- Sunu Euleug Project (Our future)
- Co-production of the show Petit bout de bois
- Participation to the 6th Djaram'Arts Festival
- Support for the development of a resource center within the Djaram'Arts cultural center
- Yakaar Project (3-year training in puppetry / circus arts and permaculture)

In September-October 2023, young graduates of the Yakaar training will be welcomed by the Center in Amiens to present their end-of-study work on the territory of the Hauts-de-France region, as well as to meet cultural stakeholders of performing arts.



International collaborations and partnerships





EUROPE





Administration et lieu de fabrique

1 bis rue d'Allonville
80136 Rivery

www.letasdesable-cpv.org
info@letasdesable-cpv.org
tél. +33(0)3 22 92 19 32

Le Tas de Sable - Ches Panses Vertes, Centre National de la Marionnette (en préparation), is supported by the French Ministry for Culture / DRAC Hauts-de-France, the Regional Council of Hauts-de-France, the Conseils départementaux of Somme and of Oise, and Amiens Métropole.



La certification qualité a été délivrée au titre de la catégorie d'action suivante:
ACTIONS DE FORMATION